

CHROMATIC SCALES

In order of Key Signature.

No. 46 - C Major

Musical notation for No. 46 - C Major. The scale is written in treble clef with a common time signature (C). It consists of two lines of music. The first line contains the notes C, C#, D, D#, E, E#, F, F#, G, G#, A, A#, B, B#, C. The second line contains the notes C, C#, D, D#, E, E#, F, F#, G, G#, A, A#, B, B#, C. Measure numbers 363, 365, and 367 are indicated above the staff.

No. 47 - G Major

Musical notation for No. 47 - G Major. The scale is written in treble clef with a common time signature (C). It consists of two lines of music. The first line contains the notes G, G#, A, A#, B, B#, C, C#, D, D#, E, E#, F, F#, G. The second line contains the notes G, G#, A, A#, B, B#, C, C#, D, D#, E, E#, F, F#, G. Measure numbers 369, 371, and 373 are indicated above the staff.

No. 48 - F Major

Musical notation for No. 48 - F Major. The scale is written in treble clef with a common time signature (C). It consists of two lines of music. The first line contains the notes F, F#, G, G#, A, A#, B, B#, C, C#, D, D#, E, E#, F. The second line contains the notes F, F#, G, G#, A, A#, B, B#, C, C#, D, D#, E, E#, F. Measure numbers 375, 377, 379, and 381 are indicated above the staff.

No. 49 - D Major

Musical notation for No. 49 - D Major. The scale is written in treble clef with a common time signature (C). It consists of two lines of music. The first line contains the notes D, D#, E, E#, F, F#, G, G#, A, A#, B, B#, C, C#, D. The second line contains the notes D, D#, E, E#, F, F#, G, G#, A, A#, B, B#, C, C#, D. Measure numbers 383, 385, and 387 are indicated above the staff.

No. 50 - Bb Major

Musical notation for No. 50 - Bb Major. The scale is written in treble clef with a common time signature (C). It consists of two lines of music. The first line contains the notes Bb, Bbb, C, C#, D, D#, Eb, Ebb, F, F#, G, G#, Ab, Abb, Bb. The second line contains the notes Bb, Bbb, C, C#, D, D#, Eb, Ebb, F, F#, G, G#, Ab, Abb, Bb. Measure numbers 389, 391, 393, and 395 are indicated above the staff.

No. 51 - A Major

Musical notation for No. 51 - A Major. The scale is written in treble clef with a common time signature (C). It consists of two lines of music. The first line contains the notes A, A#, B, B#, C, C#, D, D#, Eb, Ebb, F, F#, G, G#, A. The second line contains the notes A, A#, B, B#, C, C#, D, D#, Eb, Ebb, F, F#, G, G#, A. Measure numbers 397, 399, and 401 are indicated above the staff.

No. 52 - Eb Major

Musical notation for No. 52 - Eb Major. The scale is written in treble clef with a common time signature (C). It consists of two lines of music. The first line contains the notes Eb, Ebb, F, F#, G, G#, Ab, Abb, Bb, Bbb, C, C#, D, D#, Eb. The second line contains the notes Eb, Ebb, F, F#, G, G#, Ab, Abb, Bb, Bbb, C, C#, D, D#, Eb. Measure numbers 403, 405, 407, and 409 are indicated above the staff.

No. 53 - E Major

Musical notation for No. 53 - E Major. The scale is written in treble clef with a common time signature (C). It consists of two lines of music. The first line contains the notes E, E#, F, F#, G, G#, Ab, Abb, Bb, Bbb, C, C#, D, D#, E. The second line contains the notes E, E#, F, F#, G, G#, Ab, Abb, Bb, Bbb, C, C#, D, D#, E. Measure numbers 411, 413, and 415 are indicated above the staff.



No. 54 - Ab Major

Musical notation for No. 54 - Ab Major. The piece is in C major with a key signature of three flats (Bb, Eb, Ab). It consists of a single melodic line in treble clef with a common time signature. The scale is: Ab, Bb, C, Db, Eb, F, G, Ab. Measure numbers 417, 419, 421, and 423 are indicated above the staff.

No. 55 - B Major

Musical notation for No. 55 - B Major. The piece is in B major with a key signature of two sharps (F#, C#). It consists of a single melodic line in treble clef with a common time signature. The scale is: B, C#, D, E, F#, G, A, B. Measure numbers 425, 427, and 429 are indicated above the staff.

No. 56 - Db Major

Musical notation for No. 56 - Db Major. The piece is in C major with a key signature of three flats (Bb, Eb, Ab). It consists of a single melodic line in treble clef with a common time signature. The scale is: Db, Eb, F, G, Ab, Bb, C, Db. Measure numbers 431, 433, 435, and 437 are indicated above the staff.

No. 57 - F# Major

Musical notation for No. 57 - F# Major. The piece is in F# major with a key signature of three sharps (F#, C#, G#). It consists of a single melodic line in treble clef with a common time signature. The scale is: F#, G#, A, B, C#, D, E, F#. Measure numbers 439, 441, and 443 are indicated above the staff.

No. 58 - Gb Major

Musical notation for No. 58 - Gb Major. The piece is in C major with a key signature of three flats (Bb, Eb, Ab). It consists of a single melodic line in treble clef with a common time signature. The scale is: Gb, Ab, Bb, C, Db, Eb, F, Gb. Measure numbers 445, 447, 449, and 451 are indicated above the staff.

No. 59 - C# Major

Musical notation for No. 59 - C# Major. The piece is in C# major with a key signature of four sharps (F#, C#, G#, D#). It consists of a single melodic line in treble clef with a common time signature. The scale is: C#, D#, E, F#, G#, A, B, C#. Measure numbers 453, 455, and 457 are indicated above the staff.

No. 60 - Cb Major

Musical notation for No. 60 - Cb Major. The piece is in C major with a key signature of three flats (Bb, Eb, Ab). It consists of a single melodic line in treble clef with a common time signature. The scale is: Cb, Bb, Ab, Gb, Fb, Eb, Db, Cb. Measure numbers 459, 461, 463, and 465 are indicated above the staff.

No. 61 - A minor

Musical notation for No. 61 - A minor. The piece is in A minor with a key signature of no sharps or flats. It consists of a single melodic line in treble clef with a common time signature. The scale is: A, B, C, D, E, F, G, A. Measure numbers 467, 469, and 471 are indicated above the staff.



No. 62 - E minor

Musical notation for No. 62 - E minor, measures 473-479. The scale is written in treble clef with a key signature of one sharp (F#). The notes are: 473: E4, F#4, G4, A4, B4; 474: C5, B4, A4, G4, F#4; 475: E4, D4, C4, B3, A3; 476: G3, F3, E3, D3, C3; 477: B2, A2, G2, F2, E2; 478: D2, C2, B1, A1, G1; 479: F1, E1, D1, C1, B0.

No. 63 - D minor

Musical notation for No. 63 - D minor, measures 481-485. The scale is written in treble clef with a key signature of two flats (Bb, Eb). The notes are: 481: D4, Eb4, F4, G4, Ab4; 482: Bb4, Ab4, G4, F4, Eb4; 483: D4, C4, B3, Ab3, G3; 484: F3, Eb3, D3, C3, B2; 485: Ab2, G2, F2, Eb2, D2.

No. 64 - B minor

Musical notation for No. 64 - B minor, measures 487-493. The scale is written in treble clef with a key signature of two sharps (F#, C#). The notes are: 487: B4, C#5, D5, E5, F#5; 488: G#5, F#5, E5, D5, C#5; 489: B4, A4, G4, F#4, E4; 490: D4, C4, B3, A3, G4; 491: F#4, E4, D4, C4, B3; 492: A3, G3, F#3, E3, D3; 493: C3, B2, A2, G2, F#2.

No. 65 - G minor

Musical notation for No. 65 - G minor, measures 495-499. The scale is written in treble clef with a key signature of two flats (Bb, Eb). The notes are: 495: G4, Ab4, Bb4, C5, D5; 496: E5, D5, C5, B4, Ab4; 497: G4, F4, E4, D4, C4; 498: B3, Ab3, G3, F3, Eb3; 499: D3, C3, B2, Ab2, G2.

No. 66 - F# minor

Musical notation for No. 66 - F# minor, measures 501-507. The scale is written in treble clef with a key signature of three sharps (F#, C#, G#). The notes are: 501: F#4, G#4, A4, B4, C#5; 502: D5, C#5, B4, A4, G#4; 503: F#4, E4, D4, C4, B4; 504: A4, G#4, F#4, E4, D4; 505: C4, B4, A4, G#4, F#4; 506: E4, D4, C4, B4, A4; 507: G#4, F#4, E4, D4, C4.

No. 67 - C minor

Musical notation for No. 67 - C minor, measures 509-513. The scale is written in treble clef with a key signature of three flats (Bb, Eb, Ab). The notes are: 509: C4, Bb4, Ab4, G4, F4; 510: E4, D4, C4, Bb4, Ab4; 511: C4, Bb4, Ab4, G4, F4; 512: E4, D4, C4, Bb4, Ab4; 513: C4, Bb4, Ab4, G4, F4.

No. 68 - C# minor

Musical notation for No. 68 - C# minor, measures 515-521. The scale is written in treble clef with a key signature of four sharps (F#, C#, G#, D#). The notes are: 515: C#4, D#4, E4, F#4, G#4; 516: A4, G#4, F#4, E4, D#4; 517: C#4, B4, A4, G#4, F#4; 518: E4, D#4, C#4, B4, A4; 519: G#4, F#4, E4, D#4, C#4; 520: B4, A4, G#4, F#4, E4; 521: D#4, C#4, B4, A4, G#4.

No. 69 - F minor

Musical notation for No. 69 - F minor, measures 523-527. The scale is written in treble clef with a key signature of four flats (Bb, Eb, Ab, Db). The notes are: 523: F4, Gb4, Ab4, Bb4, C5; 524: D5, C5, B4, Ab4, Gb4; 525: F4, Eb4, D4, C4, B4; 526: Ab4, Gb4, F4, Eb4, D4; 527: C4, B4, Ab4, Gb4, F4.



No. 70 - G# minor



No. 71 - Bb minor



No. 72 - D# minor



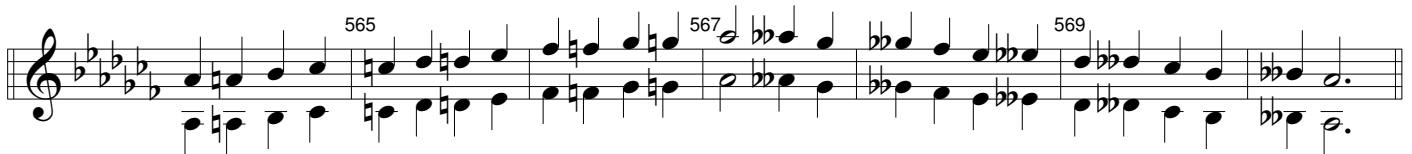
No. 73 - Eb minor



No. 74 - A# minor



No. 75 - Ab minor



FORMULA FOR CREATING ANY MAJOR SCALE IS

All Semi-Tones,

"Chromatic" comes from the latin "Chromos" which means colour. Thus chromatic scale means a scale with all the colour notes added. In this context the colour notes are the non diatonic ones i.e. the notes that are not already there as per the key signature.

Therefore whilst the actual fingering (slide position) may not change as the key signature changes, the diatonic and therefore the chromatic notes do change. Thus the appearance and recognizability of chromatic scales in written music will also change. Learning chromatic scales in the above manner will greatly enhance your ability to recognize chromatic passages and therefore your ability to sight read those passages.

