




STAGE FIVE

Tunes using the notes Concert A, Bb, C, D and the new note Eb;

the values Semi-Breve (♩ = 4 counts),

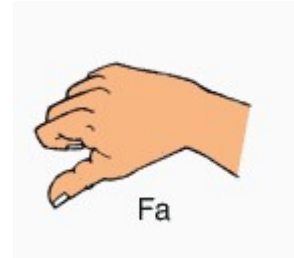
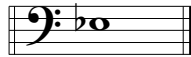
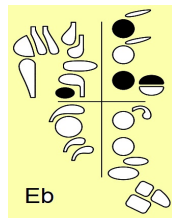
Minim (♩ or ♪ = 2 counts), Crotchet (♩ or ♪ = one count), and equivalent rests

'Breath mark (breathe here only), the word "phrase", a musical thought,

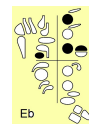
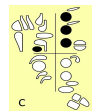
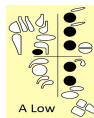
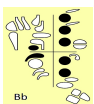
the sign  Fermata (play the note for the length of time the conductor indicates),

The concepts Duet and or Divisi - two players or sections playing different notes or lines at the same time. Ties, Slurs, Double Bar Line, Solo, Soli, Tutti, Tacet and, Kodaly

NO.5.1 - NEXT NOTE CONCERT Eb



NO. 5.2- WARM-UP 3





NO. 5.3 - WIGGLE WOBBLE TOOTH

790 791 793

Part A  
Part B

Wig - gle wob - ble loos - ie tooth, wig - gle with my tongue tongue.

794 795 797

Wig - gle wob - ble loos - ie tooth, whoops! not hun - gry now.



NO. 5.4 - FOUR NOTE SHUFFLE - Where are the breathing points?

798 799 801

Part A  
Part B

Shuf - fle shuf shuf - fle, on and on we shuf - fle.

802 803 805

Cards fall down all on the floor. Fif - ty two card pick - up.

NO. 5.5 - COUNTRY WALK - Using Divisi - Play the upper or lower notes.

806 807 809

810 811 813

NO. 5.6 - FOUR NOTE MARCH

814 815 817

Part A  
 Left right left right left right left. march all day long here.

Part B

818 819 821

Down and up, up and down, march a - long with just four notes.



NO. 5.7 - RING A RING O' ROSIE. - NB: the breath positions

822 823 825

A  
 Ring a ring o' Ros - ies, a pock-et full of pos - ies,






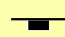

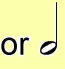



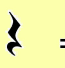
B

826 827 829

When your Moth - er calls you, out jump the pos - ies.

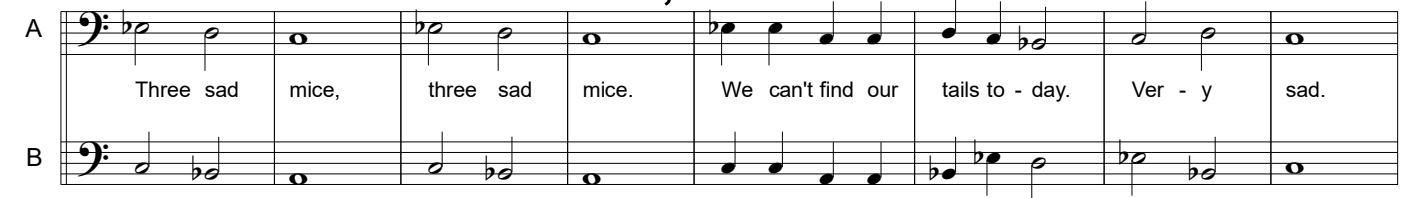
## MORE KODALY (pronounced Ko-die)

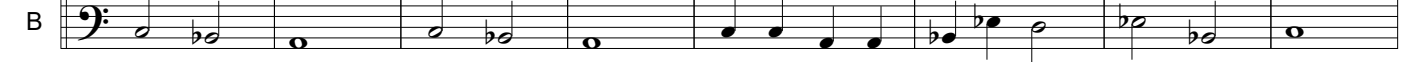
In stage 4, we learnt about Zoltan Kodaly's system of using vocal sounds to indicate note values and their sound length. We will now learn four more Kodaly sounds for the other note lengths we have used.

<p> = Eight , No Rest equivalent</p> <p> = Six , No Rest equivalent</p> <p> = Five , No Rest equivalent</p> <p> = Three , No Rest equivalent</p>	<p> = Semi-Breeve = Four ,  = Rest = Zour</p> <p> or  = Minim = Two,  = Rest = Zwo</p> <p> or  = Crotchet = Ta,  = Rest = Za</p>
--	--

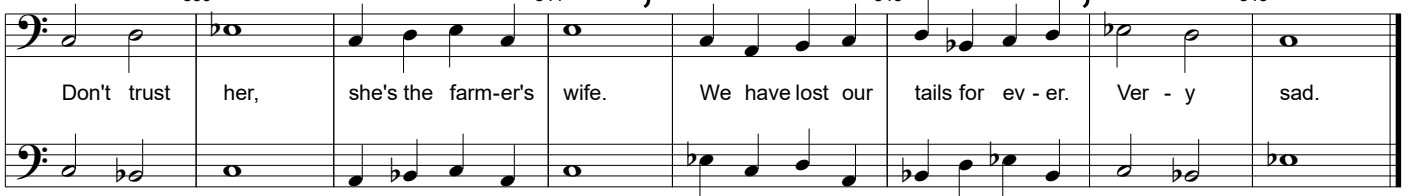
### NO. 5.8 - THREE SAD MICE

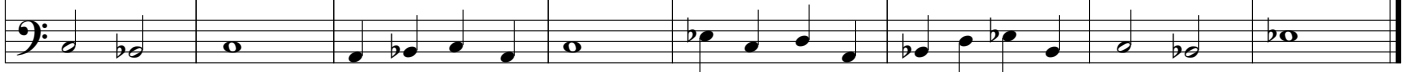
830                      831                      833                      835                      837

A  Three sad mice, three sad mice. We can't find our tails to - day. Ver - y sad.

B 

838                      839                      841                      843                      845

 Don't trust her, she's the farm-er's wife. We have lost our tails for ev - er. Ver - y sad.





### NO.5.9 - THE FJORDS (Nordic)

846                      847                      849

A 

B 

850                      851                      853







NO. 5.10 - DRUM DRUM AWAY

854 855 857

Part A  
 Drum drum rat - a - tat, drum a - way a rat - a - tat.

Part B

858 859 861

Drum drum drum a - way, play the drum a rat - tat - tat.



NO. 5.11 - THERE WAS A CROOKED MAN. - breath points?

862 863 865

Part A  
 Th'was a crook - ed man and he walked a crook - ed mile, he found a crook - ed

Part B

867 869 871

six pence up - on a crook - ed style. He bought a crook - ed cat which

872 873 875 877

caught a crook - ed mouse, and they all lived to - geth - er in a crook - ed lit - tle house.



NO. 5.12 - LITTLE ROBIN REDBREAST (English 1744)

**A**

879 881 883

A Lit - tle Rob - in Red - breast sat up - on a tree, Up went the pus - sy - cat and

B

**B**

884 885 887 889

down went he, Down came pus - sy cat, a - way Rob - in ran, Says lit - le

**C**

891 893 895

Rob - in Red - breast, "Catch me if you can." Lit - tle Rob - in Red - breast jumped u - pon a

**D**

897 899 901

wall, Pus - sy - cat jumped af - ter him, and al - most had a fall. Lit - tle Rob - in

903 905 907 909

chirped and sang and what did he say? Pus - sy cat said "Me - ow", and Rob - in flew a way.

5.13 - CONCERT TIME DUET 4.

For Seven Hills State School.

**A**

911 913 915

Part A

Part B

916 917 **B** 919 921

922 923 925 **C** 927

928 929 931 933

**D Percussion** 935 937 939

941 943 945 **E** 947

948 949 951 953

5.14 - CONCERT TIME DUET 5, MEDLEY 5  
Wiggle Wobble, Four Note Shuffle, Drum Away, Croked Little Man

**A** Wiggle Wobble

955 957

A  
Wig - gle wob - ble loos - ie tooth, wig - gle with my tongue tongue.

B

958 959 961

Wig - gle wob - ble loos - ie tooth, whoops! not hun - gry now.

**B** 4 Note Shuffle

963 965

Shuf - fle shuf shuf - fle, on and on we shuf - fle.

966 967 969

Cards fall down all on the floor. Fif - ty two card pick - up.

**C** Drum Away

971 973

Drum drum rat - a - tat, drum a - way a rat - a - tat.



974 975 977

Drum drum drum a - way, play the drum a rat - tat - tat.

**D** Crooked Man

979 981

Th'was a crook - ed man and he walked a crook - ed mile, he

982 983 985

found a crook - ed six pence up - on a crook - ed style. He

**E**

987 989

brought a crook - ed cat which caught a crook - ed mouse, and they

990 991 993

all lived to - geth - er in a crook - ed lit - tle house.

# SOLO SEVEN

NO. 5.15 - Solo medley with piano accompaniment. (Medley 5)

Wiggle Wobble, Four Note Shuffle, Drum Away, Croked Little Man

994 995 **A Wiggle Wobble** 997 999

Soloist

Accompaniment

1000 1001 1003 **B 4 Note Shuffle** 1005

1006 1007 1009 1011

**C** Drum Away

1013 , 1015

**D** Crooked Man

1017 , 1019 , 1021

**E**

1023 , 1025 , 1027 , 1029

1030 , 1031 , 1033 , 1035

NO. 5.16 - CONCERT TIME DUET 6, MEDLEY 6  
Ring a Ring a Rosie, The Fjords, Little Robin Red Breast, Zombie In the Phryg.

**A Ring a Rosie**

1037 , 1039 ,

A Ring a ring o' Ros - ies, a pock - et full of pos - ies,

B

1040 1041 , 1043 ,

When your Moth - er calls you, out jump the pos - ies.

**B The Fjords**

1045 , 1047 ,

1048 1049 , 1051 ,

**C Little Robin**

1053 , 1055 ,

Lit - tle Rob - in Red - breast sat u - pon a rail.

1056 1057 1059

Nid - dle nod - dle went his head, wig - gle wag - gle went his tail.

**D** 1061 1063

Lit - tle Rob - in Red - breast came to vis - it me.

1064 1065 1067

This is what he whist - led, "Thank you for the tea."

**E** **Zombie in the Phryg** 1069 1071 Stamp feet on the floor

Zom - bies walk - ing, Lock them in the Phryg.  
Zom - bies walk - ing. Zom - bies on the prow!  
Stamp feet on the floor Stamp feet on the floor

1072 1073 1075 2ND TIME: Stand in Zombie pose

Zom - bies stalk - ing, Did they get out? Oh! Yes!  
Zom - bies stalk - ing, But they won't catch me. Ah!!

Stamp feet on the floor Stamp feet on the floor

# SOLO EIGHT

NO. 5.17 - Solo with piano accompaniment.

**Moderato** (♩ = c. 108)

1076 A 1077 1079

Soloist

Accompaniment

Chord diagrams: C, C7, F, C, F7, Bb7, Eb, Bb, Eb, Cm7 3fr., Dm, Eb, Bb

1081 1083

Chord diagrams: Eb, Dm7 3fr., Cm, Eb, Bb, Ab, D°7, Ab, Bb7, Eb

1085 B 1087 1089

Chord diagrams: Cm7 3fr., Bb, Eb, Eb, Bb, Eb, Bb, Bb, Bb, Cm7 3fr., Bb, Bb7, Eb

1090 1091 C 1093

Chord progression: Eb, D°7, Eb, D, Eb6, Gm7, Bb7, A°7, Gm7, Eb

1095 1097 1099

Chord progression: Cm7, A°7, Fm7, Bb, Fm, Gm, Bb, Eb, F, D°7, AbM7, Eb

1100 1103 D

Chord progression: Bb9, Eb, Bb, Eb, Cm7, Dm, Eb, Bb, Eb, Dm7, Cm

1105 1107 1109

Chord progression: Eb, Bb, Ab, D°7, Ab, Bb7, Eb, Cm7, Bb9, Eb

NO. 5.18 - CONCERT TIME DUET 7

Για το φεγγάρι Λοκρίς (Gia to Fengári Lokrís)

1110 1111 1113 1115

Two staves of music. The top staff (A) has a long melodic line with a slur over measures 1110-1113. The bottom staff (B) has a bass line with rests in measures 1110-1111 and 1113-1114, and notes in measures 1112 and 1115.

1116 1117 A 1119 1121

Two staves of music. Measure 1117 is a whole rest. Measure 1119 has a boxed 'A' above it. The top staff (A) has a melodic line with a slur over measures 1119-1121. The bottom staff (B) has a bass line with notes throughout.

1122 1123 B 1125 1127

Two staves of music. Measure 1125 has a boxed 'B' above it. The top staff (A) has a melodic line with a slur over measures 1125-1127. The bottom staff (B) has a bass line with notes throughout.

1128 1129 1131 1133

Two staves of music. The top staff (A) has a melodic line with slurs and accents. The bottom staff (B) has a bass line with notes throughout.

1134 1135 C 1137 1139

Two staves of music. Measure 1135 has a boxed 'C' above it. The top staff (A) has a long melodic line with a slur over measures 1135-1138. The bottom staff (B) has a bass line with notes throughout.

1140 1141 D 1143 1145

Two staves of music. Measure 1143 has a boxed 'D' above it. The top staff (A) has a melodic line with slurs and accents. The bottom staff (B) has a bass line with notes throughout.

1146 1147 1149 1151

Two staves of music. The top staff (A) has a melodic line with a slur over measures 1149-1151. The bottom staff (B) has a bass line with notes throughout.

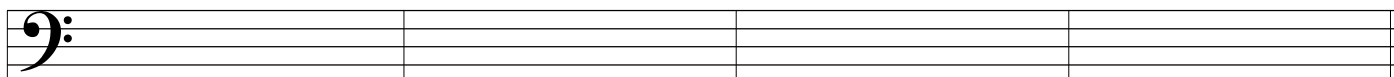


NO. 5.19 - YOUR COMPOSITION

1152

1153

1155



## STAGE FIVE ASSESSMENT

1. Composition above..
2. Play one single Stage 5 song or, tune from memory
3. Perform a Stage 5 duet medley with an ensemble
4. Perform a Stage 5 piano accompanied solo.