

STAGE FIVE



Tunes using the notes Concert A, Bb, C, D and the new note Eb;

the values Semi-Breve (♩ = 4 counts),

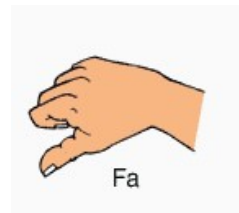
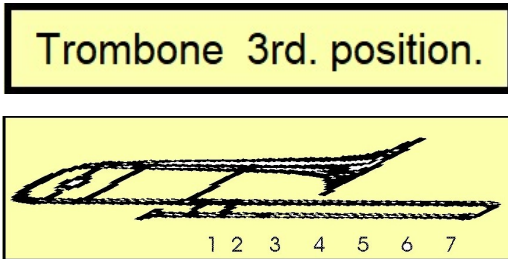
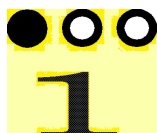
Minim (♩ or ♪ = 2 counts), Crotchet (♩ or ♪ = one count), and equivalent rests

'Breath mark (breathe here only), the word "phrase", a musical thought,

the sign Fermata (play the note for the length of time the conductor indicates),

The concepts Duet and or Divisi - two players or sections playing different notes or lines at the same time. Ties, Slurs, Double Bar Line, Solo, Soli, Tutti, Tacet and, Kodaly

NO.5.1 - NEXT NOTE CONCERT Eb



NO. 5.2- WARM-UP 3

**Trombone 1st Position**      **Trombone 2nd. Position.**      **Trombone 6th. position OR 1st position plus the trigger (T1)**      **Trombone 4th. position**

762      765      767

**Trombone 3rd. position.**

769      771      773      775

777      779      781      783

785      787      789



NO. 5.3 - WIGGLE WOBBLE TOOTH

790 791 793

Part A  
Part B

Wig - gle wob - ble loos - ie tooth, wig - gle with my tongue tongue.

794 795 797

Wig - gle wob - ble loos - ie tooth, whoops! not hun - gry now.



NO. 5.4 - FOUR NOTE SHUFFLE - Where are the breathing points?

798 799 801

Part A  
Part B

Shuf - fle shuf shuf - fle, on and on we shuf - fle.

802 803 805

Cards fall down all on the floor. Fif - ty two card pick - up.

NO. 5.5 - COUNTRY WALK - Using Divisi - Play the upper or lower notes.

806 807 809

810 811 813

NO. 5.6 - FOUR NOTE MARCH

814 815 817

Part A  
 Left right left right left right left. march all day long here.

Part B

818 819 821

Down and up, up and down, march a - long with just four notes.



NO. 5.7 - RING A RING O' ROSIE. - NB: the breath positions

822 823 825

A  
 Ring a ring o' Ros - ies, a pock-et full of pos - ies,

B

826 827 829

When your Moth - er calls you, out jump the pos - ies.





NO. 5.10 - DRUM DRUM AWAY

854 855 857

Part A  
 Drum drum rat - a - tat, drum a - way a rat - a - tat.

Part B

858 859 861

Drum drum drum a - way, play the drum a rat - tat - tat.



NO. 5.11 - THERE WAS A CROOKED MAN. - breath points?

862 863 865

Part A  
 Th'was a crook - ed man and he walked a crook - ed mile, he found a crook - ed

Part B

867 869 871

six pence up - on a crook - ed style. He bought a crook - ed cat which

872 873 875 877

caught a crook - ed mouse, and they all lived to - geth - er in a crook - ed lit - tle house.



NO. 5.12 - LITTLE ROBIN REDBREAST (English 1744)

**A**

879 881 883

A Lit - tle Rob - in Red - breast sat up - on a tree, Up went the pus - sy - cat and

B

**B**

884 885 887 889

down went he, Down came pus - sy cat, a - way Rob - in ran, Says lit - le

**C**

891 893 895

Rob - in Red - breast, "Catch me if you can." Lit - tle Rob - in Red - breast jumped u - pon a

**D**

897 899 901

wall, Pus - sy - cat jumped af - ter him, and al - most had a fall. Lit - tle Rob - in

903 905 907 909

chirped and sang and what did he say? Pus - sy cat said "Me - ow", and Rob - in flew a way.

5.13 - CONCERT TIME DUET 4.

For Seven Hills State School.

**A**

911 913 915

Part A

Part B

916 917 **B** 919 921

922 923 925 **C** 927

928 929 931 933

**D Percussion**

935 937 939

941 943 945 **E** 947

948 949 951 953

5.14 - CONCERT TIME DUET 5, MEDLEY 5  
 Wiggle Wobble, Four Note Shuffle, Drum Away, Croked Little Man

**A** Wiggle Wobble

955 957

A  
 Wig - gle wob - ble loos - ie tooth, wig - gle with my tongue tongue.

B

958 959 961

Wig - gle wob - ble loos - ie tooth, whoops! not hun - gry now.

**B** 4 Note Shuffle

963 965

Shuf - fle shuf shuf - fle, on and on we shuf - fle.

966 967 969

Cards fall down all on the floor. Fif - ty two card pick - up.

**C** Drum Away

971 973

Drum drum rat - a - tat, drum a - way a rat - a - tat.



974 975 977

Drum drum drum a - way, play the drum a rat - tat - tat.

**D** Crooked Man

979 981

Th'was a crook - ed man and he walked a crook - ed mile, he

982 983 985

found a crook - ed six pence up - on a crook - ed style. He

**E**

987 989

brought a crook - ed cat which caught a crook - ed mouse, and they

990 991 993

all lived to - geth - er in a crook - ed lit - tle house.

# SOLO SEVEN

NO. 5.15 - Solo medley with piano accompaniment. (Medley 5)

Wiggle Wobble, Four Note Shuffle, Drum Away, Croked Little Man

994 995 **A Wiggle Wobble** 997 999

Soloist

Accompani-ment

1000 1001 1003 **B 4 Note Shuffle** 1005

1006 1007 1009 1011

**C** Drum Away

1013 , 1015

Chords: Eb, F, Eb, F, Bb, Bb7, Eb, F

**D** Crooked Man

1017 , 1019 , 1021

Chords: Eb, F, Bb, Cm7, Bb7, Eb, Bb, F7, Bb, F

**E**

1023 , 1025 , 1027 , 1029

Chords: F, Bb, F7, Bb, F, F7, Bb

1030 , 1031 , 1033 , 1035

Chords: F7, F, Bb, F7, Bb, F7, Bb, F7, Bb, F7, Bb, Eb, Cm7, Bb

NO. 5.16 - CONCERT TIME DUET 6, MEDLEY 6  
Ring a Ring a Rosie, The Fjords, Little Robin Red Breast, Zombie In the Phryg.

**A Ring a Rosie**

1037 , 1039 ,

A Ring a ring o' Ros - ies, a pock - et full of pos - ies,

B

Musical notation for part A of 'Ring a Ring a Rosie'. It consists of two staves, A and B, in bass clef with a key signature of one flat. The melody is on staff A, and the accompaniment is on staff B. The lyrics are: 'Ring a ring o' Ros - ies, a pock - et full of pos - ies,'. Measure numbers 1037 and 1039 are indicated above the staff.

1040 1041 , 1043 ,

When your Moth - er calls you, out jump the pos - ies.

Musical notation for part A of 'Ring a Ring a Rosie'. It consists of two staves, A and B, in bass clef with a key signature of one flat. The melody is on staff A, and the accompaniment is on staff B. The lyrics are: 'When your Moth - er calls you, out jump the pos - ies.'. Measure numbers 1040, 1041, and 1043 are indicated above the staff.

**B The Fjords**

1045 , 1047 ,

Musical notation for part B of 'The Fjords'. It consists of two staves, A and B, in bass clef with a key signature of one flat. The melody is on staff A, and the accompaniment is on staff B. Measure numbers 1045 and 1047 are indicated above the staff.

1048 1049 , 1051 ,

Musical notation for part B of 'The Fjords'. It consists of two staves, A and B, in bass clef with a key signature of one flat. The melody is on staff A, and the accompaniment is on staff B. Measure numbers 1048, 1049, and 1051 are indicated above the staff.

**C Little Robin**

1053 1055 ,

Lit - tle Rob - in Red - breast sat u - pon a rail.

Musical notation for part C of 'Little Robin'. It consists of two staves, A and B, in bass clef with a key signature of one flat. The melody is on staff A, and the accompaniment is on staff B. The lyrics are: 'Lit - tle Rob - in Red - breast sat u - pon a rail.'. Measure numbers 1053 and 1055 are indicated above the staff.

1056 1057 1059

Nid - dle nod - dle went his head, wig - gle wag - gle went his tail.

**D** 1061 1063

Lit - tle Rob - in Red - breast came to vis - it me.

1064 1065 1067

This is what he whist - led, "Thank you for the tea."

**E** **Zombie in the Phryg** 1069 1071 Stamp feet on the floor

Zom - bies walk - ing, Lock them in the Phryg.  
Zom - bies walk - ing. Zom - bies on the prowl  
Stamp feet on the floor Stamp feet on the floor

1072 1073 1075 2ND TIME: Stand in Zombie pose

Zom - bies stalk - ing, Did they get out? Oh! Yes!  
Zom - bies stalk - ing, But they won't catch me. Ah!!

Stamp feet on the floor Stamp feet on the floor

# SOLO EIGHT

NO. 5.17 - Solo with piano accompaniment.

**Moderato** (♩ = c. 108)

1076 A 1077 1079

Soloist

Accompaniment

Chord diagrams: C, C7, F, C, F7, Bb7, Eb, Bb, Eb, Cm7, Dm, Eb, Bb.

1081 1083

Chord diagrams: Eb, Dm7, Cm, Eb, Bb, Ab, D°7, Ab, Bb7, Eb.

1085 B 1087 1089

Chord diagrams: Cm7, Bb, Eb, Eb, Bb, Eb, Bb, Bb, Bb, Cm7, Bb, Bb7, Eb.

1090 1091 C 1093

Chord progression: Eb, D°7, Eb, D, Eb6, Gm7, Bb7, A°7, Gm7, Eb

1095 1097 1099

Chord progression: Cm7, A°7, Fm7, Bb, Fm, Gm, Bb, Eb, F, D°7, AbM7, Eb

1100 1103 D

Chord progression: Bb9, Eb, Bb, Eb, Cm7, Dm, Eb, Bb, Eb, Dm7, Cm

1105 1107 1109

Chord progression: Eb, Bb, Ab, D°7, Ab, Bb7, Eb, Cm7, Bb9, Eb

NO. 5.18 - CONCERT TIME DUET 7

Για το φεγγάρι Λοκρίς (Gia to Fengári Lokrís)

1110 1111 1113 1115

Two staves of music. The top staff (A) has a long melodic line with a slur over measures 1110-1113. The bottom staff (B) has a bass line with rests in measures 1110-1111 and 1113-1114.

1116 1117 A 1119 1121

Two staves of music. Measure 1117 is a whole rest. Measure 1119 has a boxed 'A' above it. The bottom staff has a bass line with rests in measures 1116-1117 and 1119-1120.

1122 1123 B 1125 1127

Two staves of music. Measure 1125 has a boxed 'B' above it. The bottom staff has a bass line with rests in measures 1125-1126 and 1127-1128.

1128 1129 1131 1133

Two staves of music. The bottom staff has a bass line with rests in measures 1128-1129 and 1133-1134.

1134 1135 C 1137 1139

Two staves of music. Measure 1135 has a boxed 'C' above it. The top staff has a long melodic line with a slur over measures 1135-1138. The bottom staff has a bass line with rests in measures 1134-1135 and 1137-1138.

1140 1141 D 1143 1145

Two staves of music. Measure 1143 has a boxed 'D' above it. The bottom staff has a bass line with rests in measures 1143-1144.

1146 1147 1149 1151

Two staves of music. The bottom staff has a bass line with rests in measures 1147-1148 and 1149-1150. The top staff has a long melodic line with a slur over measures 1146-1151.

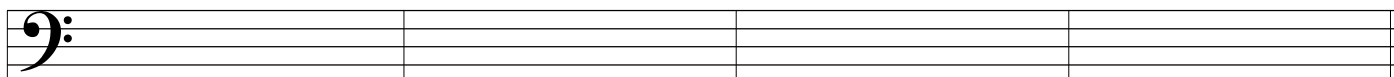


NO. 5.19 - YOUR COMPOSITION

1152

1153

1155



## STAGE FIVE ASSESSMENT

1. Composition above..
2. Play one single Stage 5 song or, tune from memory
3. Perform a Stage 5 duet medley with an ensemble
4. Perform a Stage 5 piano accompanied solo.