




STAGE FIVE

Tunes using the notes Concert A, Bb, C, D and the new note Eb;

the values Semi-Breve (♩ = 4 counts),

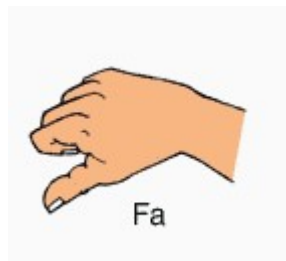
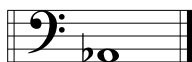
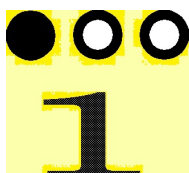
Minim (♩ or ♪ = 2 counts), Crotchet (♩ or ♪ = one count), and equivalent rests

'Breath mark (breathe here only), the word "phrase", a musical thought,

the sign  Fermata (play the note for the length of time the conductor indicates),

The concepts Duet and or Divisi - two players or sections playing different notes or lines at the same time. Ties, Slurs, Double Bar Line, Solo, Soli, Tutti, Tacet and, Kodaly

NO. 5.1 - NEXT NOTE - CONCERT Ab



NO. 5.2- WARM-UP 3

762 765 767 769

771 773 775 777 779 781

782 783 785 787 789



NO. 5.3 - WIGGLE WOBBLE TOOTH

790 791 793

Part A  
Wig - gle wob - ble loos - ie tooth, wig - gle with my tongue tongue.

Part B

Part B for Eb Brass

794 795 797

Wig - gle wob - ble loos - ie tooth, whoops! not hun - gry now.

NO. 5.4 - FOUR NOTE SHUFFLE - Where are the breathing points?



798 799 801

Part A  
Shuf - fle shuf shuf - fle, on and on we shuf - fle.

Part B

Part B for Eb Brass

802 803 805

Cards fall down all on the floor. Fif - ty two card pick - up.

NO. 5.5 - COUNTRY WALK - Using Divisi - Play the upper or lower notes.

806 807 809

810 811 813

NO. 5.6 - FOUR NOTE MARCH

814 815 817

Part A

Left right left right left right left. march all day long here.

Part B

B for Eb

818 819 821

Down and up, up and down, march a - long with just four notes.





NO.5.9 - THE FJORDS (Nordic)

846 847 849

A

B

B for Eb

850 851 853

NO. 5.10 - DRUM DRUM AWAY



854 855 857

Part A

Part B

B for Eb

Drum drum rat - a - tat, drum a - way a rat - a - tat.

858 859 861

Drum drum drum a - way, play the drum a rat - tat - tat.



NO. 5.11 - THERE WAS A CROOKED MAN. - breath points?

862 863 865 ,

Part A  
Th'was a crook-ed man and he walked a crook-ed mile, he found a crook-ed

Part B

Part B for Eb Brass

867 869 , 871 ,

six pence up on a crook-ed style. He brought a crook-ed cat which

872 873 , 875 877

caught a crook-ed mouse, and they all lived to- geth-er in a crook-ed lit- tle house.



NO. 5.12 - LITTLE ROBIN REDBREAST (English 1744)

**A** 879 881 883

A Lit - tle Rob-in Red - breast sat up - on a tree, Up went the pus - sy - cat and

B

B for Eb

884 885 **B** 887 889

down went he, Down came pus - sy cat, a - way Rob-in ran, Says lit - le

891 893 **C** 895

Rob - in Red - breast, "Catch me if you can." Lit - tle Rob - in Red - breast jumped u - pon a

897 899 901 **D**

wall, Pus - sy - cat jumped af - ter him, and al - most had a fall. Lit - tle Rob - in

903 905 907 909

chirped and sang and what did he say? Pus - sy cat said "Me-ow", and Rob - in flew a - way.

5.13 - CONCERT TIME DUET 4.  
For Seven Hills State School.



**A**

911 913 915

Part A

Part B

B for Eb

916 917 **B** 919 921

922 923 925 **C** 927



928 929 931 933

Musical notation for measures 928-933, featuring three staves of bass clef notes.

**D** Percussion 935 937 939

Musical notation for measures 935-939, featuring three staves of bass clef notes with a 'D Percussion' label.

941 943 945 947 **E**

Musical notation for measures 941-947, featuring three staves of bass clef notes with an 'E' label.

948 949 951 953

Musical notation for measures 948-953, featuring three staves of bass clef notes.

5.14 - CONCERT TIME DUET 5, MEDLEY 5  
 Wiggle Wobble, Four Note Shuffle, Drum Away, Croked Little Man

**A Wiggle Wobble**

955 , 957 , 959 ,

A  
 Wig-gle wob-ble loos-ie tooth, wig-gle with my tongue tongue. Wig - gle wob-ble loos-ie tooth,

B

B for Eb

**B 4 Note Shuffle**

960 , 961 , 963 , 965 ,

whoops! not hun - gry now. Shuf - fle shuf shuf - fle, on and on we shuf - fle.

**C Drum Away**

966 , 967 , 969 , 971 ,

Cards fall down all on the floor. Fif - ty two card pick - up. Drum drum rat - a - tat,

972 973 975 977

drum a - way a rat - a - tat. Drum drum drum a - way, play the drum a rat - tat - tat.

**D** Crooked Man

979 981 983

Th'was a crook-ed man and he walked a crook-ed mile, he found a crook-ed six pence up-

**E**

984 985 987

on a crook-ed style. He brought a crook - ed cat which caught a crook - ed

989 991 993

mouse, and they all lived to - geth-er in a crook-ed lit - tle house.

# SOLO SEVEN

NO. 5.15 - Solo medley with piano accompaniment. (Medley 5)

Wiggle Wobble, Four Note Shuffle, Drum Away, Croked Little Man

994 995 **A Wiggle Wobble** 997 999

Soloist

Accompaniment

Chords: Eb, Fm, Eb, Ab, Ab, Eb, Fm, Ab, Eb, Eb7, Ab, Fm7

1000 1001 1003 **B 4 Note Shuffle** 1005

Accompaniment

Chords: Ab, Eb, Fm, Ab, Eb, Fm, Eb7, Ab, Fm, Cm, Fm, Cm7 3fr.

1006 1007 1009 1011

Accompaniment

Chords: Fm7, Eb, Bb, Cm7 3fr., Fm7, Eb, Ab, Eb, Fm, Cm7 3fr., Dm, Cm7 3fr., Bb7, Eb, Fm

Page 60B

**C** Drum Away

1013

1015

1017

Musical notation for section C 'Drum Away' (measures 1013-1017). The system includes a bass line, a grand staff (treble and bass), and guitar chord diagrams. Chords shown are Ab, Bb, Eb, and Eb7. Fingering numbers (1, 2, 3, 4) are provided for the guitar diagrams.

1018

1019

**D** Crooked Man

1021

1023

Musical notation for section D 'Crooked Man' (measures 1018-1023). The system includes a bass line, a grand staff, and guitar chord diagrams. Chords shown are Eb, Fm7, Eb7, Ab, Eb, Bb7, Eb, Bb, and Bb. Fingering numbers are provided for the guitar diagrams.

1024

1025

1027

**E**

1029

Musical notation for section E (measures 1024-1029). The system includes a bass line, a grand staff, and guitar chord diagrams. Chords shown are Eb, Bb7, Eb, Bb, Bb7, and Eb. Fingering numbers are provided for the guitar diagrams.

1030

1031

1033

1035

Musical notation for section E continuation (measures 1030-1035). The system includes a bass line, a grand staff, and guitar chord diagrams. Chords shown are Bb7, Bb, Eb, Bb7, Eb, Bb7, Eb, Bb7, Eb, Bb7, Eb, Bb7, Eb, Ab, Fm7, and Eb. Fingering numbers are provided for the guitar diagrams.

NO. 5.16 - CONCERT TIME DUET 6, MEDLEY 6

Ring a Ring a Rosie, The Fjords, Little Robin Red Breast, Zombie In the Phryg.

**A** Ring a Rosie

1037 , 1039 ,

Ringa ring o' Ros - ies, a pocket full of pos - ies, Wher your Mother

B for Eb

Detailed description: This block contains the musical notation for the first section, 'Ring a Rosie'. It features three staves: a vocal line with lyrics, a piano accompaniment line, and a bass line. The key signature has one flat (Bb). The lyrics are: 'Ringa ring o' Ros - ies, a pocket full of pos - ies, Wher your Mother'. Measure numbers 1037 and 1039 are indicated above the staff.

**B** The Fjords

1041 , 1043 , 1045 ,

calls you, out jump the pos - ies.

Detailed description: This block contains the musical notation for the second section, 'The Fjords'. It features three staves: a vocal line with lyrics, a piano accompaniment line, and a bass line. The lyrics are: 'calls you, out jump the pos - ies.'. Measure numbers 1041, 1043, and 1045 are indicated above the staff.

1046 1047 , 1049 ,

Detailed description: This block contains the musical notation for an instrumental section. It features three staves: a piano accompaniment line and two bass lines. Measure numbers 1046, 1047, and 1049 are indicated above the staff.

**C** Little Robin

1051 , 1053 1055 ,

Lit - tle Rob - in Red - breast sat u - pon a rail.

Detailed description: This block contains the musical notation for the third section, 'Little Robin'. It features three staves: a vocal line with lyrics, a piano accompaniment line, and a bass line. The lyrics are: 'Lit - tle Rob - in Red - breast sat u - pon a rail.'. Measure numbers 1051, 1053, and 1055 are indicated above the staff.

1056 1057 1059 **D**

Nid - dle nod - dle went his head, wig - gle wag - gle went his tail. Lit - tle Rob - in

1061 1063 1065

Red - breast came to vis - it me. This is what he whist - led,

1066 1067 **E** Zombie in the Phryg Stamp feet on the floor 1069

"Thank you for the tea." Zom - bies walk - ing, Zom - bies walk - ing. Stamp feet on the floor Lock them in the Zom - bies on the

1071 Stamp feet on the floor 1073 Stamp feet on the floor 1075 2ND TIME: Stand in Zombie pose

Phryg. Zom - bies stalk - ing Zom - bies stalk - ing Stamp feet on the floor Did they get out? Oh! Yes! Stamp feet on the floor Zom - bies stalk - ing Stamp feet on the floor But they won't catch me. Ah!! Stamp feet on the floor

# SOLO EIGHT

NO. 5.17 - Solo with piano accompaniment.

1076 A 1077 1079 1081

Soloist

Accompaniment

Measures 1076-1081: Soloist part in bass clef, piano accompaniment in grand staff. Chords: F, F7, Bb, Bb7, Eb7, Ab, Eb, Ab, Fm7, Gm, 3fr., Ab, Eb, Ab, Gm7, Fm, 3fr.

1082 1083 1085

Measures 1082-1085: Soloist part in bass clef, piano accompaniment in grand staff. Chords: Ab, Eb, Db, G°7, Db, Eb7, Ab, Fm7, Eb, Ab.

B 1086 1087 1089

Measures 1086-1089: Soloist part in bass clef, piano accompaniment in grand staff. Chords: Ab, Eb, Ab, Eb, C, 3fr., Eb, Fm7, Eb, Eb7, Ab.



1090 1091 1093 C

Ab G°7 Ab G Ab6 Cm7 3fr. Eb7 D°7 Cm7 3fr. Ab

1095 1097 1099

Fm7 Fm7 D°7 Bbm7 Eb Bbm Cm 3fr. Eb Bb G°7 DbM7 4fr. Ab

1100 1103 D

Bb7 Eb7 Ab Eb Ab Fm7 Gm 3fr. Ab Eb Ab Gm7 3fr. Fm

1105 1107 1109

Ab Eb Db 3fr. G°7 Db Eb7 Ab Fm7 Eb7 Ab

# NO. 5.18 - CONCERT TIME DUET 7

Για το φεγγάρι Λοκρίς (Gia to Fengári Lokrís)

1110 1111 1113 1115 1117

A

B

E♭ "B"

A

1119 1121 1123 1125

1126 B

1127 1129 1131 1133

1134 C

1135 1137 1139 1141 1143

D

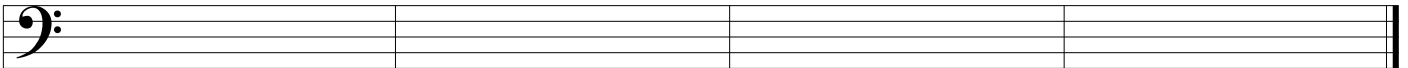
1145 1147 1149 1151

NO. 5.19 - YOUR COMPOSITION

1152

1153

1155



STAGE FIVE ASSESSMENT

1. Composition above..
2. Play one single Stage 5 song or, tune from memory
3. Perform a Stage 5 duet medley with an ensemble
4. Perform a Stage 5 piano accompanied solo.